

# CLARENDON



All Ali Robinson products are carefully and individually finished by hand and therefore some variation in colour and patina will occur between pieces and over time. The image serves as a guide only.



## CLARENDON - Double Vitrine

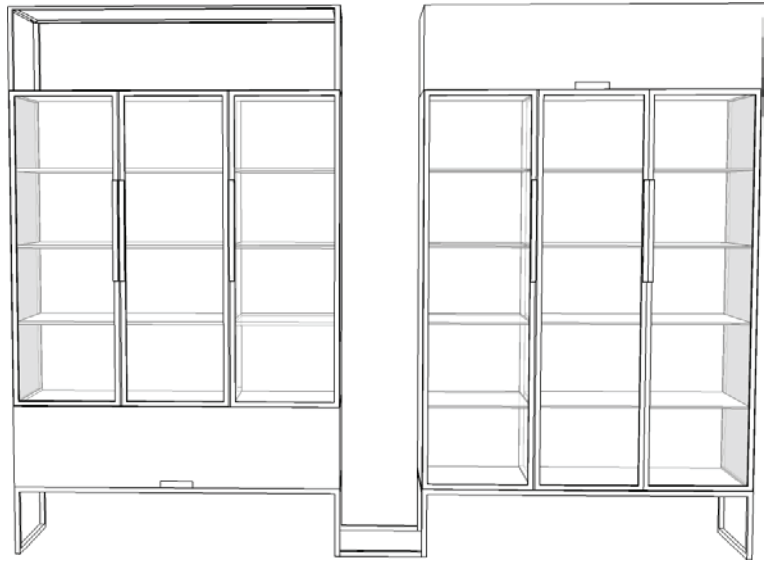
### FINISHES

Legs: Patinated black steel | Doors: 6 patinated steel doorframes with toughened white glass | Shell: variety of patinated, perforated and highly polished steel | Shelves: 7 adjustable toughened white glass, 2 adjustable coloured sprayed metal and 5 adjustable patinated steel | Storage boxes: sprayed metal storage boxes with flush magnetic handles.

### ALTERNATIVE FINISHES



Any colour available within the RAL D2 colour chart



### DIMENSIONS:

2700 W 430 D 2000 H

### BESPOKE:

Bespoke sizes, materials and specifications available.

### DATE OF DESIGN:

2016

### TYPE:

Suitable for Domestic and Contract applications.

### LEAD TIMES:

8 weeks from receipt of deposit

### CARE

Sprayed steel: soap and water and thoroughly dry | Patinated black steel and Perforated steel: Briwax | Highly polished steel: Ambersill Aerosol multi purpose metal cleaner

